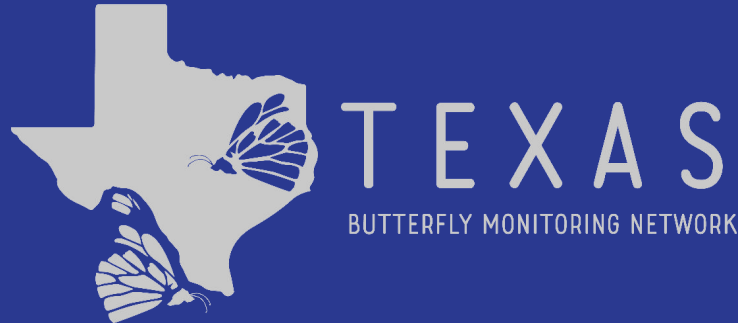
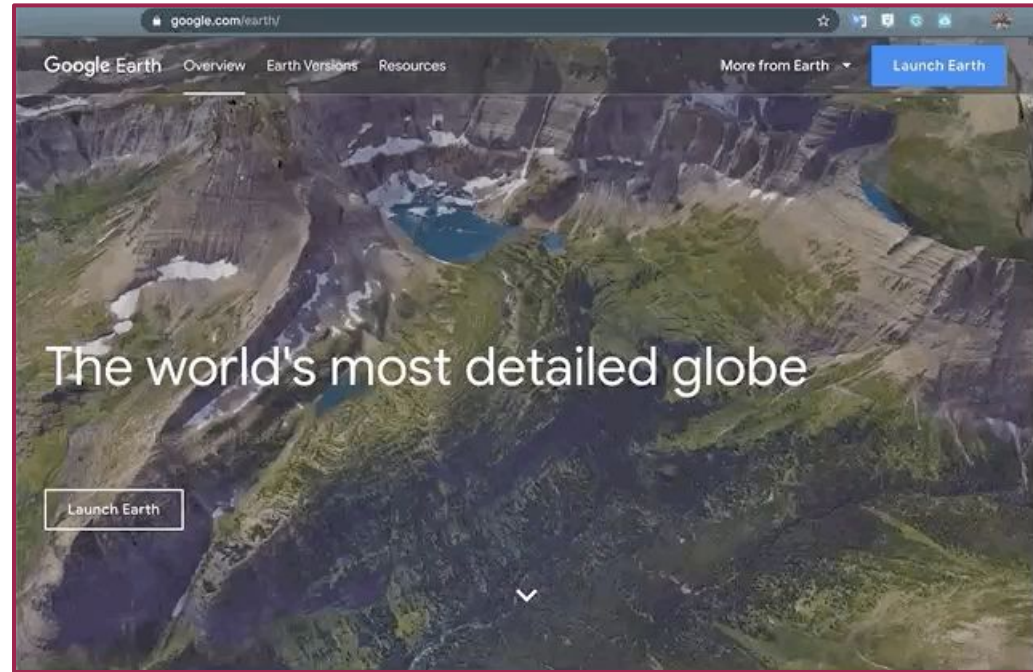


Creating a Route with Google Earth

2021, Rebeca Leininger




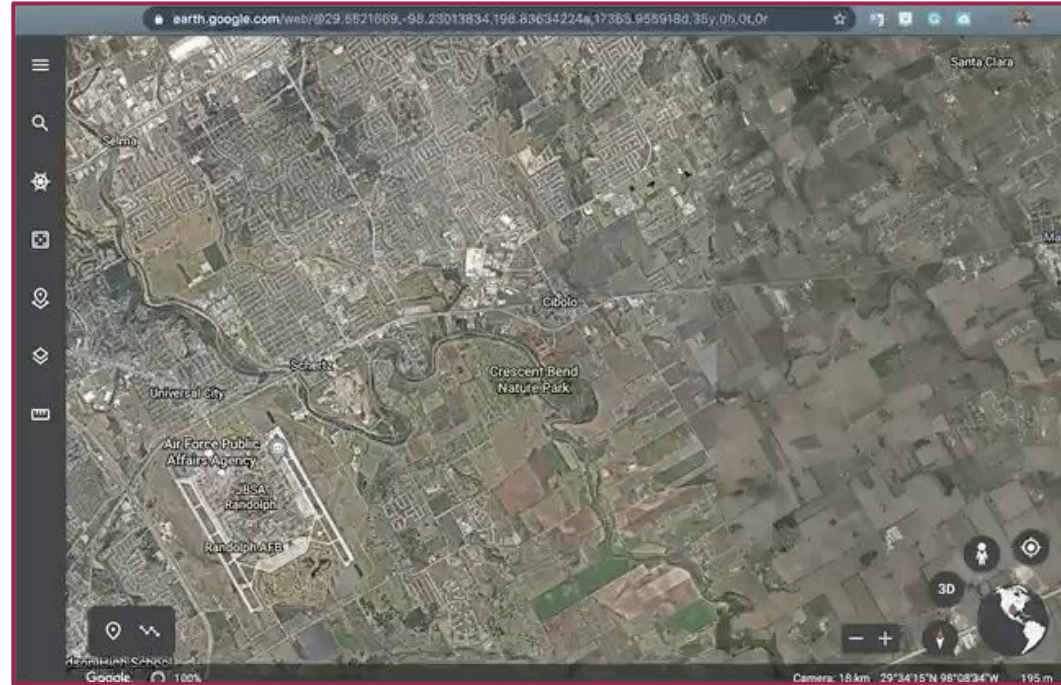
Step 1: Go to earth.google.com on your computer to create a new map.



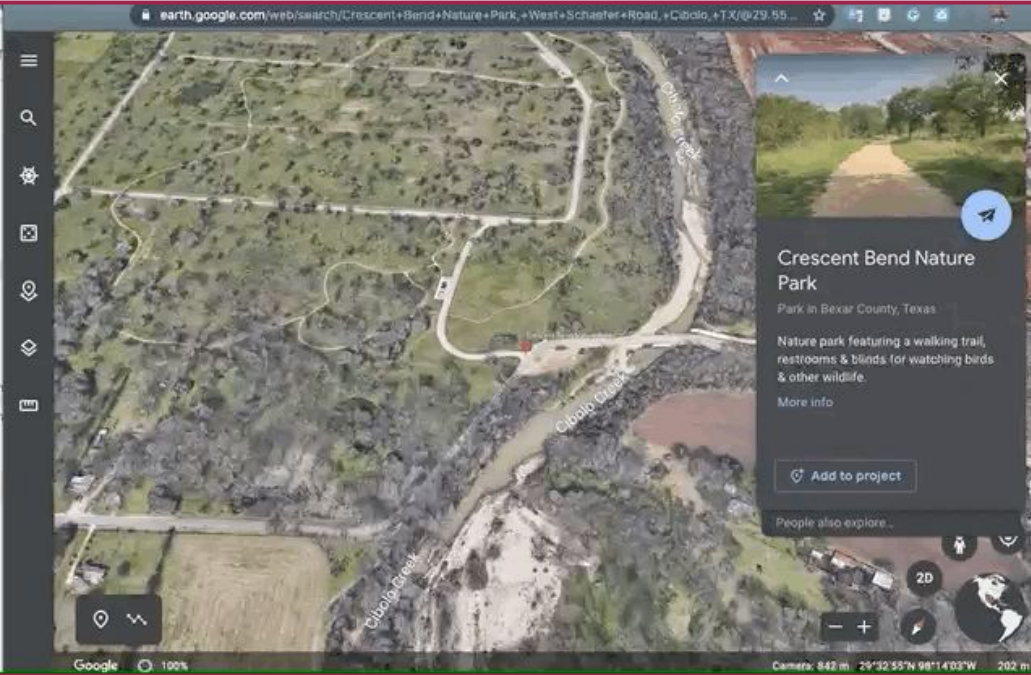
- A. Click the blue “Launch Earth” button on the top right of the page to open Google Earth.


Step 2: Find your location

- A. Click the search icon  located on the top left of the page
- B. Type an address, park name, or GPS coordinate.
- C. Zoom in to until you see your place.

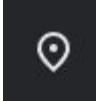


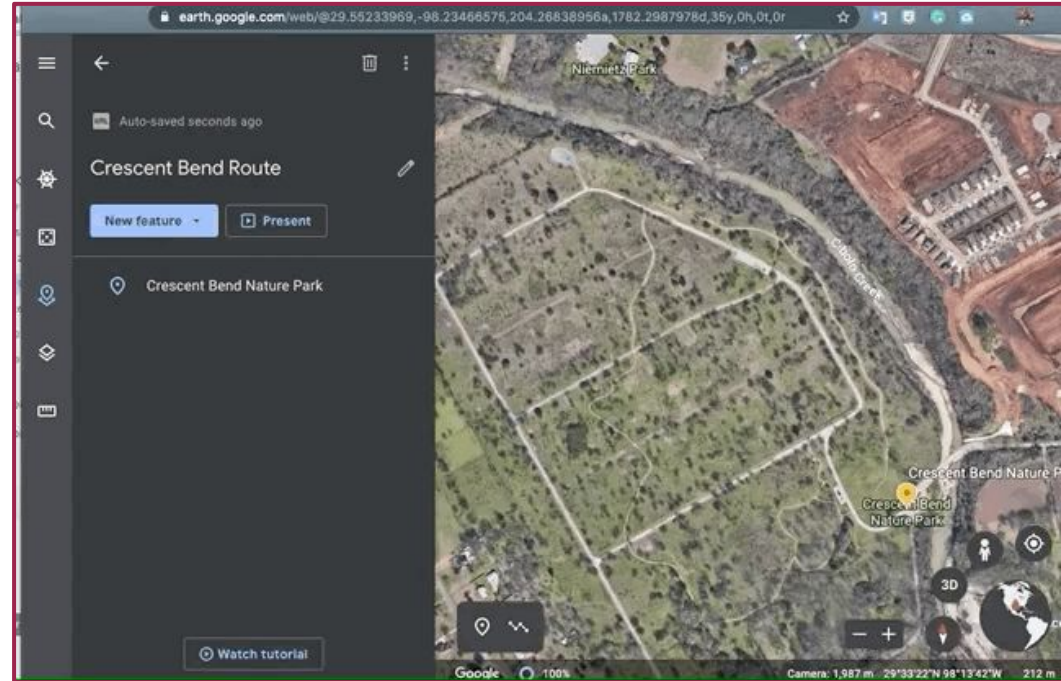
Step 3: Create a Project



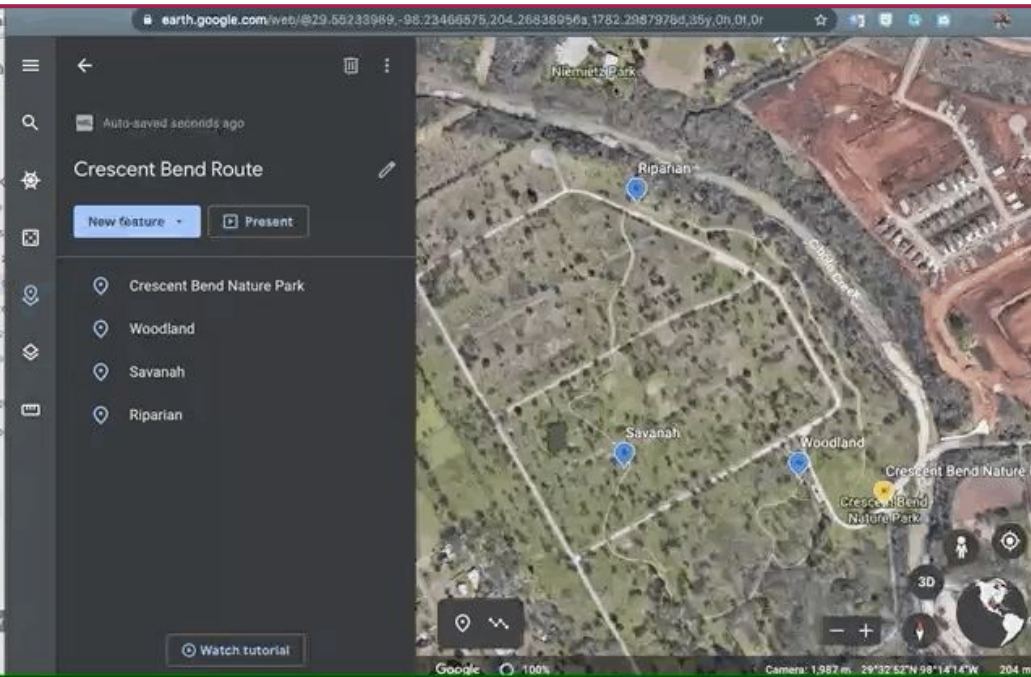
- A. Click the  button located at the right of the page.
- B. Type the name of your route.
- C. Choose the option "Create New .KML File".
- D. Save the project.


Step 4: Add a placemark for each habitat

- A. First click the “add placemark” button 
- B. Use the placemark to show the start of your habitats.



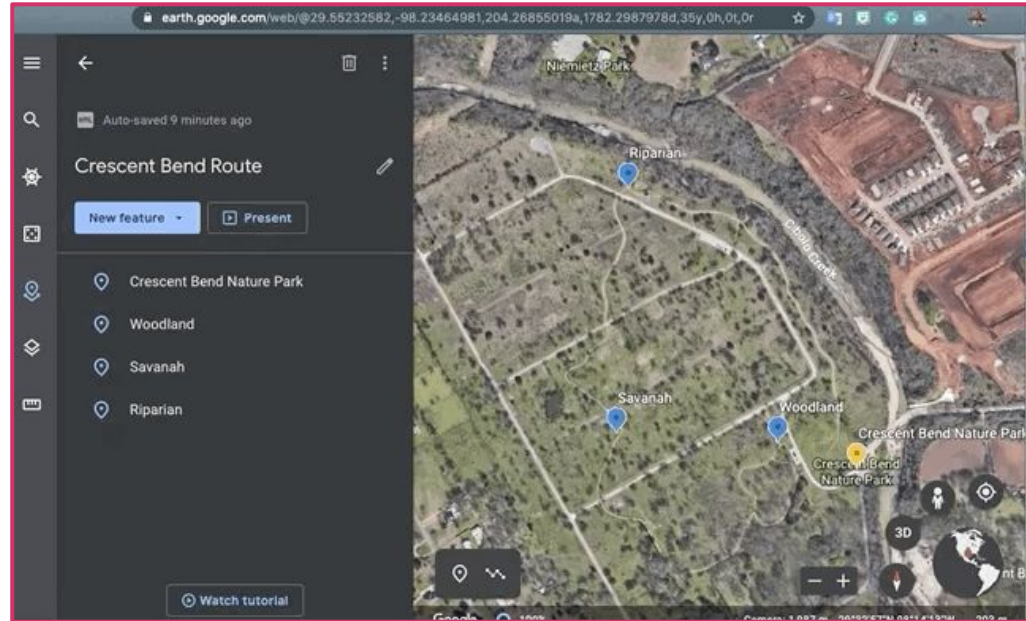
Step 5: Draw a line around your route.



- Click the “draw a line” button. 
- Click to add points along your route to draw the line.
- Make sure to end your route by clicking at the starting point to complete your loop.

Step 6: Export your .KML file

- A. Click the three dots at the top of the page.
- B. Click “export as .KML”



Step 7: Walk your route and take a photo to show where a new habitat starts.

- A. File names for your photos need to be saved as “Section A - ((habitat name))”

For example:

Section A - Creekside

Section B - Roadside

Section C - Bridge

This is very important so we know how to label your sections in Pollardbase.



Step 8: Fill out this form to submit your new route.

New Route Information

- Once we have all the required information, the Director will enter your data into Pollardbase and let you know when it ready for you to enter your data.



Please let us know if you have trouble creating your route in Google Maps by sending an email to butterflymonitorstx@gmail.com with the subject “Route Support”.

We will get back to you as soon as we can with next steps.

